

— Our Location —

Find us at 14 Alvin Place in our historic building right off Valley Road next to the Acme shopping center. Once you climb the six steps to our front door, you'll find that our theatre has 130 upholstered seats, and is fully air-conditioned for your comfort.



Become a Patron

As a non-profit community theatre, run entirely by a group of tireless volunteers, Studio Players relies on the generous support of its patrons to continue providing quality entertainment at affordable prices.

PLATINUM PATRON **\$125+**

- Tickets to all 4 Mainstage Shows
- Additional tax-deductible donation
- Listing in our program and online with our thanks
- Invitation to our Christmas Party

GOLD PATRON **\$85**

- Tickets to all 4 Mainstage Shows

SILVER PATRON **\$65**

- Tickets to 3 Mainstage Shows

Senior and Student discounts may not be applied to the purchase of any Patron package or combined with other discount offers.

Non-Profit Org.
U.S. Postage
PAID
Permit No. 242
Montclair, NJ

Return Service Requested

**Quality Theatre
at Affordable Prices**

STUDIO PLAYERS
Premiered 1937
14 Alvin Place
Upper Montclair, NJ 07043

STUDIO PLAYERS

2024-2025 is HERE!

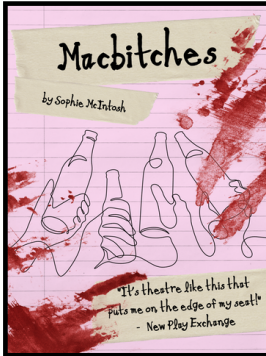


**Montclair's own community
theatre since 1937**



14 Alvin Place
Upper Montclair, NJ 07043
(973) 744-9752
www.studioplayhouse.org

Introducing our 2024-2025 season



MACBITCHES

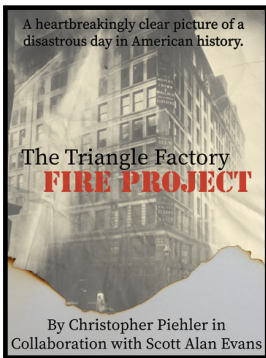
By: Sophia McIntock

Directed by: Sharon Gary

October 18, 19, 25, 26, and November 1, 2 at 8:00 pm

October 20 and 27 at 3:00 pm

When a college freshman is unexpectedly given the coveted role of Lady Macbeth, a few upperclassmen invite her over to “celebrate” her casting (and reassert their positions atop the departmental hierarchy.) As the Fireball and Svedka flow, the girls interrogate their own sense of ambition and the power structures that have shaped their theatrical education. It’s only when the night spirals into violent and shocking acts of betrayal, that they learn that “what’s done cannot be undone.”



THE TRIANGLE FACTORY FIRE PROJECT

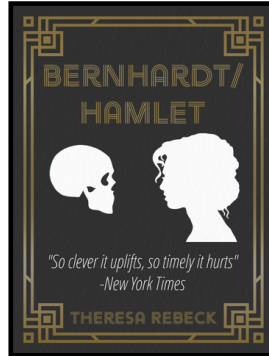
By: Christopher Piehler in collaboration with Scott Alan Evans

Directed by: Eric Robitaille

January 24, 25, 31 and February 1, 7, 8 at 8:00 pm

January 26 and February 2 at 3:00 pm

The Triangle Shirtwaist Factory fire of 1911 took the lives of 146 workers, most of whom were young, female immigrants between the ages of 13 and 23. These lives fell victim to corporate greed, corruption, and a prejudice that still raises its head in modern politics. What can these senseless actions teach us about ourselves and society over 100 years later?



BERNHARDT/HAMLET

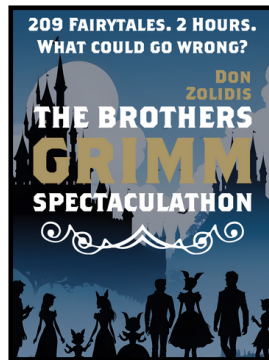
By: Theresa Rebeck

Director: L.A. Mars

March 14, 15, 21, 22, 23, 28, 29 at 8:00 pm

March 16 and 23 at 3:00 pm

Mark Twain wrote: “There are five kinds of actresses: bad actresses, fair actresses, good actresses, great actresses. And then there is Sarah Bernhardt.” At the turn of the 20th century, Sarah Bernhardt tackles her most ambitious role yet: the tragic Prince of Denmark. But is society ready for a female Hamlet? Faced with almost insurmountable odds, Bernhardt must decide to be or not to be...true to herself and the role of a lifetime.



THE BROTHERS GRIMM SPECTACULATHON

By: Don Zolidis

Directed By: Leticia Diaz

June 6, 7, 13, 14, 20, 21 at 8:00 pm

June 8 and 15 at 3:00 pm

In this fast-paced theatrical romp through the enchanted forest, a teen/adult-centric retelling of Rapunzel, Rumpelstiltskin, Hansel and Gretel, Snow White, Sleeping Beauty, Cinderella, and more ensues. Twists and turns will make you laugh until you cry as classic tales are turned on their heads.

*Note that material is not appropriate for young children.

SPECIAL EVENTS

Children's Shows and Benefits



We also have several benefit performances throughout the year that are individually priced.



MISMATCH CABARET

September 21 at 8:00 pm

Join us for an evening of song where tunes typically sung by one gender are now reinterpreted and sung by another.

.Price: \$20 per person

FAIRYTALE CHRISTMAS CAROL

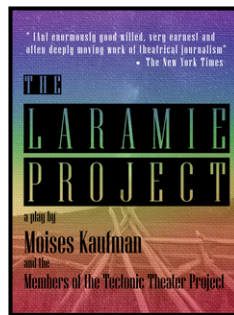
By: Filip Kobler and Cindy Marcus

Directed by: Beatriz Esteban Messina

December 7, 8, 14, 15 at 1:30 & 3:30 pm

Everyone's favorite classic holiday tale gets the fractured fairy-tale treatment.

Price: \$12 per person



THE LARAMIE PROJECT

By: Moisés Kaufman and the Members of Tectonic

Directed by: Thomas Donohue

May 1, 2, 3 at 8:00 pm

May 4 at 3:00 pm

It's been 25 years since the groundbreaking production of The Laramie Project debuted off-Broadway. How have we progressed in the fight for equal rights and human decency for the LGBTQ+ community? How have we not?

Price: \$22 and \$25

—Order Form—

Please complete Order Form and return to Studio Players along with payment or credit card information

Studio Players, 14 Alvin Place, Upper Montclair, NJ 07043

Name _____

Address _____

City _____ State _____

Phone _____

Email _____

Qty _____ Price Per _____ Amount _____

____ Platinum Patron \$125.00 _____

(4 shows plus an additional tax-deductible donation, listed in our program and online with our thanks, and an invitation to our Christmas Party.)

____ Gold Patron (4 shows) \$85.00 _____

____ Silver Patron (3 shows) \$65.00 _____

Credit Card: Visa MasterCard Discover

Name on Card _____

Card # _____ Exp. _____

Please make checks payable to Studio Players

Mainstage Shows _____ Day _____ Date _____ Time _____

____ MacBitches _____

____ The Triangle Factory Fire Project _____

____ Bernhardt/Hamlet _____

____ The Brother's Grimm Spectaculathon _____

MAINSTAGE TICKET PRICES

Adults: \$25

Students/Seniors: \$22

*Group discounts for parties of 20 or more are available. Contact our box office for details at 973-744-9752.

All shows are open seating on a first-arrived, first-selected basis.

All ticket sales and Patron donations are non-refundable. Tickets may be exchanged for a different performance of the same show (advance notice required, subject to availability).

Subscribe online at studioplayhouse.org/subscribe or call us at 973-744-9752 and leave a message with a time for a box office member to call you to process your order. Calls will be returned within approx. 48 hrs.

Tickets for these events are sold separately at <https://spinc.booktix.com/>